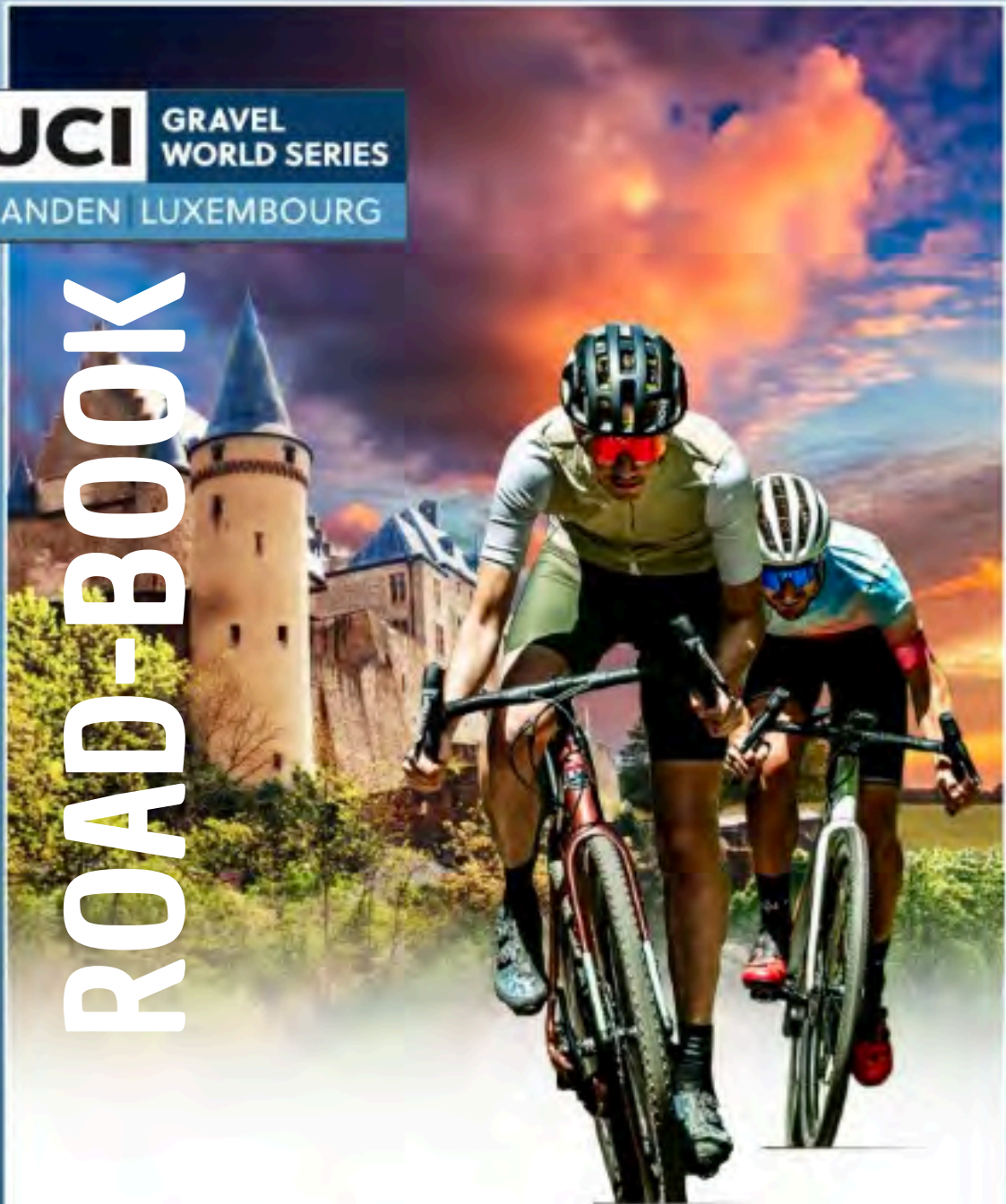


Eislek GRAVEL LUXEMBOURG

 **GRAVEL
WORLD SERIES**
VIANDEN LUXEMBOURG

ROAD-BOOK





Dear Riders,

Welcome to the Eislek Gravel Luxembourg!

On behalf of the entire Letz'Xplore team, we are thrilled to present you with the official roadbook of this unique adventure. Whether you're here to race, ride, or simply explore, you're now part of a growing gravel community that celebrates nature, challenge, and discovery.

Eislek is more than just a region – it's a feeling. With every climb, descent, and forest path, you'll experience the raw beauty of Luxembourg and its cross-border charm.

This roadbook is your guide through the weekend: routes, timing, safety tips, and everything you need to make the most of your ride.

We've worked hard to design an event that blends emotion, effort, and exploration. Now it's your turn to bring it to life!

Ride safe, ride strong – and above all, enjoy every moment.
See you at the start line!

Letz'Xplore Asbl
Organiser – Eislek Gravel Luxembourg





Vianden

Vianden, a small town in the Grand Duchy of Luxembourg, enchants visitors with its narrow streets and numerous festivities. However, its real gem is its castle, which stands majestically above the Our Valley.

Vianden is part of the Luxembourg Ardennes, also known as the Éislek. It is located on the border with the Eifel in Germany and the Mullerthal in Luxembourg. The town stretches along the banks of the Our, which sometimes serves as a natural border with Germany, and is dominated by its impressive castle.

Vianden Castle, unique in Europe

The famous Vianden Castle is part of Luxembourg's cultural heritage. Owned by the state, it is a prime example of a feudal residence, built in Romanesque and Gothic styles. The CNN news channel even ranked it among the 20 most beautiful castles in the world. After extensive restoration work, the building now looks its best and offers breathtaking views of the Our Valley and the town below.

Hiking in Vianden

Vianden is an inviting place to explore. Surrounded by green hills and nestled in a valley, the town is criss-crossed by a dense network of hiking trails.

‘Among the 20 most beautiful castles in the world, according to CNN’

Event location

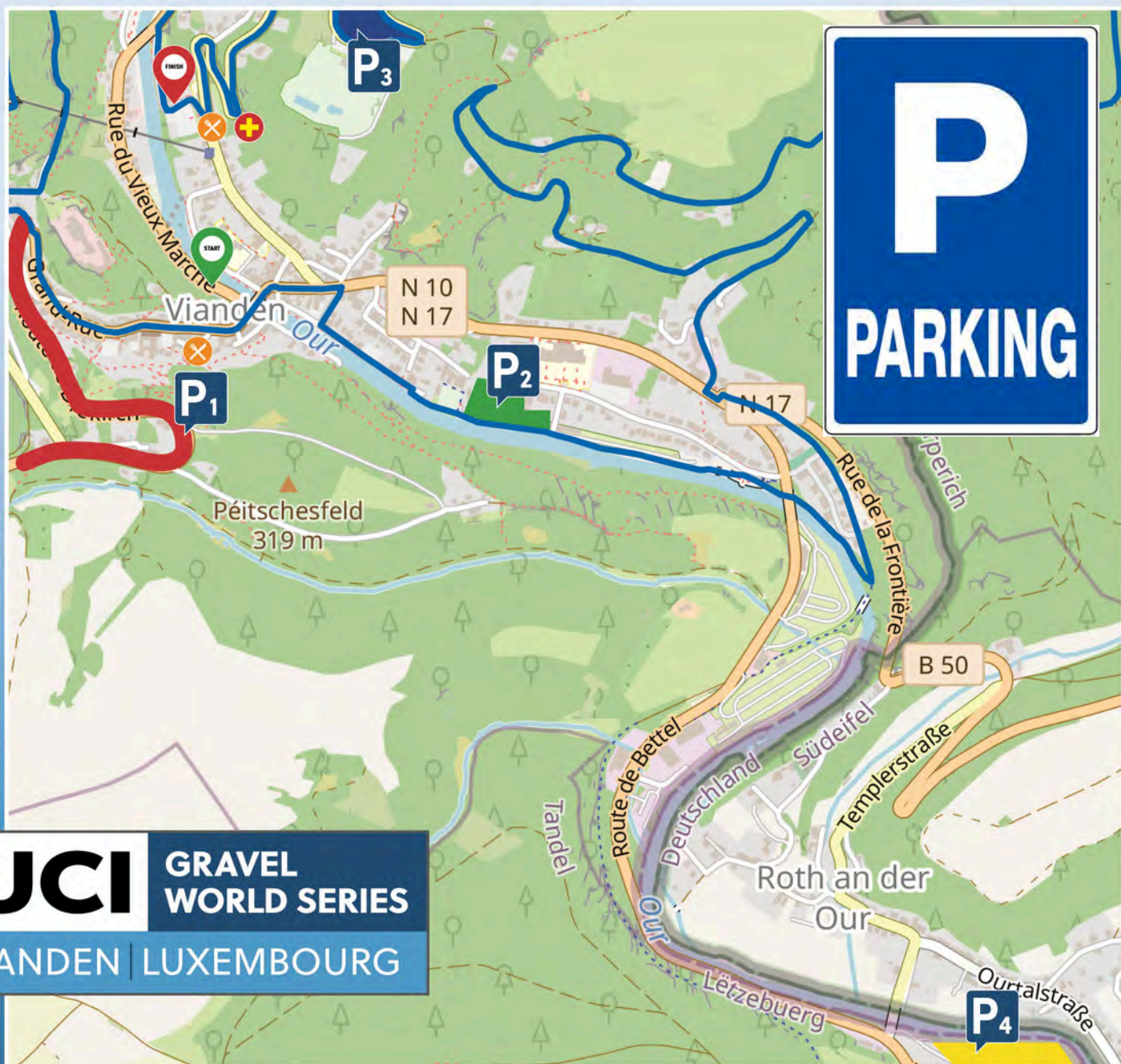
The centre of the event will be located at the **Larei cultural centre**. The centre is located in the immediate vicinity and offers all necessary amenities.

The start will be judged nearby, while the finish will be on the site itself. The chairlift departure point is also located right next door.

[Location Map](#)



Adress : Rue Charles Matthias, 9419 Vianden, Luxembourg



- For those coming from the north (Liège, Netherlands), car park P1 is recommended.
- The swimming pool car park is reserved for the participants in the 115 km race (more difficult access on foot).
- For spectators and supporters, we recommend car parks P1 and P2.



How to access the event ?

By plane:

- Luxembourg Airport (LUX): The nearest major airport is located approximately 50 km (31 miles) from Vianden. From the airport, you can take a train or bus to Vianden.

By train:

- From Luxembourg City: Take a train to Ettelbruck from Luxembourg City, which offers regular connections to many European cities.
- From Ettelbruck to Vianden: From Ettelbruck, take bus line 570 directly to Vianden. This bus ride offers beautiful views and takes about 30 minutes.

By bus:

- Direct buses: Regular bus services, including line 570, connect Luxembourg City to Vianden and offer a comfortable and convenient means of transport.
- Regional connections: Buses from neighbouring countries, such as Belgium and Germany, connect to the Luxembourg public transport network.

By car:

- From Luxembourg City: Take the A7 motorway north towards Ettelbruck, then follow the signs for Vianden. The journey takes about an hour.
- From neighbouring countries: Vianden is easily accessible via well-maintained roads from Germany, Belgium and France, making it a convenient destination by car from neighbouring regions.

Use this mobility planner (app or website) to plan your journey in the best possible way!

All public transport (train, tram, bus) is free in Luxembourg!!!



From: Aéroport Luxembourg/Findel				
To: Vianden, Gare				
Departure: 30.05.2025, 13:30 Arrival: 30.05.2025, 14:49 Duration: 1:19 h Changes: 2x				
Stop	Time	Platform	Services	Duration
Aéroport Luxembourg/Findel	Dep 13:30	Plat. 4	Bus 850 Direction: Bertrange, Belle-Etoile	1:19 h
partially cloudy, 25 °C				
Dommeldange, Barriär	Arr 13:46			
Dommeldange, Gare	Dep 13:50	Plat. 1	RE 412 Direction: Troisvierges, Gare	
Ettelbruck, Gare	Arr 14:13	Plat. 4		
Ettelbruck, Gare routière	Dep 14:23	Plat. 2	Bus 181 Direction: Eisenbach, Bei der Baach	
Vianden, Gare	Arr 14:49			
clear, 26 °C				

Registration procedure

Rider registration takes place inside cultural center Larei at Vianden. Follow the signs when you arrive. We'll make sure you'll find your way.

Registration Times:

Friday, June 20: 14.00 – 20.00

Saturday, June 21 : 07.00 – 10.00

Before heading to the registration desk, please double-check your details. It's important that your registration is complete and correct, especially your date of birth, gender, distance, and category. This ensures you're placed in the right category.

You'll receive an email with your personal QR code. Have this email and/or QR Code ready on your phone (or printed out) when you register. It helps us move things along quickly and smoothly. Someone else can pick up your starter pack – as long as they bring your personal QR code.

At the registration desk, you'll receive an envelope containing your race number, frame plate and sticker containing the chip.



- The **race number** must be pinned to the back of your jersey.
Mandatory



- The **race plate** must be affixed to the front of your bike.
Mandatory (necessary for photos)



- The **sticker** contains the timing chip and must be affixed to the saddle rail (as shown in the photo on the right).
Mandatory (to be classified)



Starter pack

Welcome Pack Contents – A Complete Experience for All Participants



By registering for our UCI race, you're getting more than just a race number – you're entering a complete experience designed for passionate and demanding cyclists. Here's what your welcome pack includes:

- **Official UCI course:** Ride on a certified route that meets the highest standards of international cycling.
- **High-precision timing system** with personalized frame plate and official race number – for accurate and professional tracking of your performance.
- **2 to 4 feed zones** along the route: to keep your energy up throughout the race.
- **Access to showers:** recover comfortably after your effort.
- **Secure bike park** access: leave your bike safely in a dedicated area.
- **UCI medal** for qualified riders: a prestigious keepsake of your achievement.
- Access to the **partner village:** explore exhibitors, products, and activities in a friendly and festive atmosphere.

This pack is designed to offer more than just a race – it's a complete sporting, logistical, and social experience tailored to your needs. Every detail is planned so you can focus on what truly matters: riding, performing, and enjoying the day.

Race regulation

You'll find the full UCI Race Regulations here below. Please make sure to read them carefully before the race.

Key highlights: As part of the official qualification system for the 2025 UCI Gravel World Championships, Eislek Gravel Luxembourg 2025 grants qualification spots for the UCI Gravel World Championships 2025 in South Limburg, Netherlands. Riders who finish in the top 25% of their respective Elite and age group categories will qualify. The top 25% is determined based on the number of starters in each age group, not the total number of finishers. Qualification is always based on your specific age group, and results will be determined by age group standings, not overall results



UCI Race Regulation

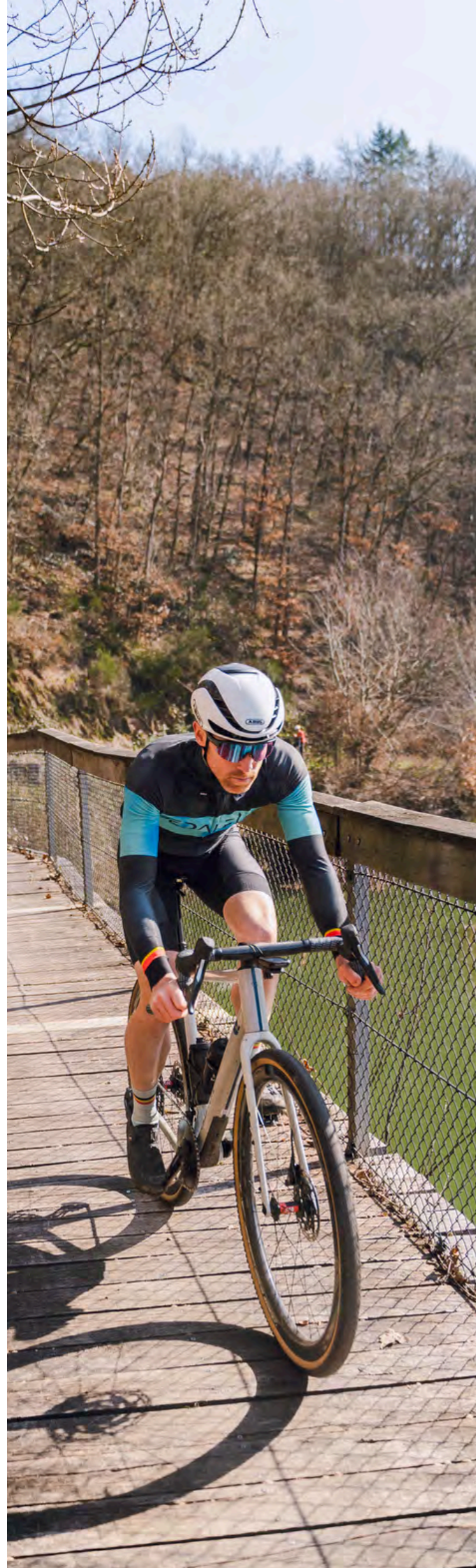
Eislek Gravel Luxembourg Regulation

Age Categories

Riders will compete in the following official UCI Gravel World Series categories. These are based on age and gender, and apply to both the race results and qualification for the 2025 UCI Gravel World Championships.

Please note: your age category is determined by your age on December 31, 2025, not on the day of the race.

- Elite Men & Women
- 19–34 years – Men & Women
- 35–39 years – Men & Women
- 40–44 years – Men & Women
- 45–49 years – Men & Women
- 50–54 years – Men & Women
- 55–59 years – Men & Women
- 60–64 years – Men & Women
- 65–69 years – Men & Women
- 70–74 years – Men & Women
- 75+ years – Men & Women





Qualifying Distance

At Eislek Gravel Luxembourg, you can choose between two race distances: 70 km or 115 km.

However, if you're aiming to qualify for the UCI Gravel World Championships 2025, it's important to ride the distance that matches your official UCI age category. Only riders in the top 25% of their category will qualify for the World Championships, but this is only possible if you ride the correct qualifying distance listed below.

UCI Official Qualification Distances:

115 km

- Elite Men & Women
- Women aged 19–49
- Men aged 19–59

70 km

- Women aged 50+
- Men aged 60+



Should you not want to enter the 115 km race, you can enter into the Open Eislek Gravel, open to all, on a distance of 70km.

Important

Competitors who are overtaken will be stopped at the next time they cross the finish line, even if they have not completed the entire distance.



Starting Procedure

On Saturday, June 21st, the race will start in waves, based on your category. After the Elite Men, the start times will be determined by age group. Each category will have its own gun time.

Check the signage at the event and the starting list prior to the event to find out in which category you need to start. Start areas open at 09:00. You'll find clothing drop-off boxes at each starting area.



Starting times

10.00 ELITES MEN

10.02 Age 19 – 34 MEN

10.04 Age 35 – 39 MEN

10.06 Age 40 – 44 MEN

10.08 Age 45 – 49 MEN

10.10 Age 50 – 54 MEN

10.12 Age 55 – 59 MEN

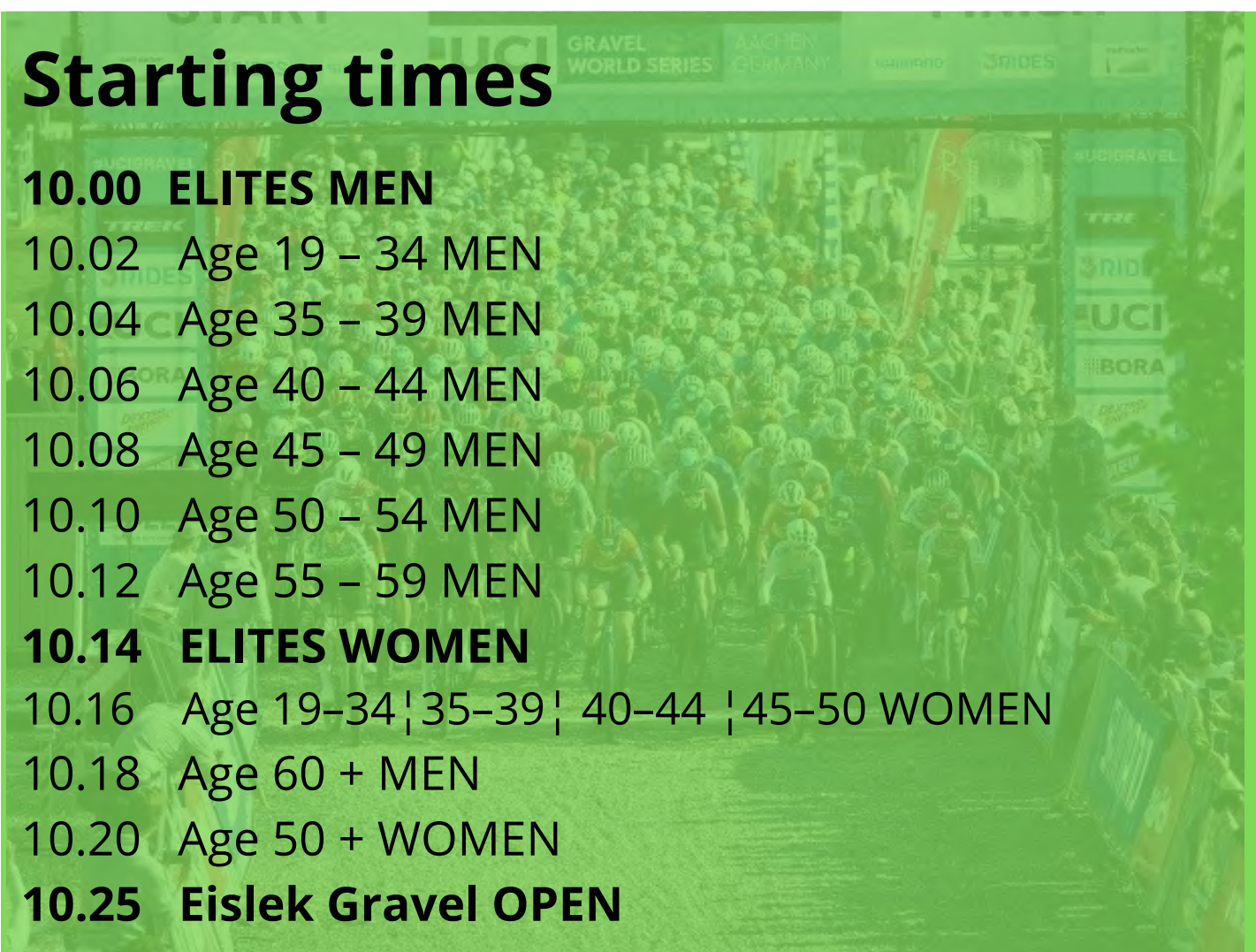
10.14 ELITES WOMEN

10.16 Age 19–34 | 35–39 | 40–44 | 45–50 WOMEN

10.18 Age 60 + MEN

10.20 Age 50 + WOMEN

10.25 Eislek Gravel OPEN



Start List

This is the (provisional) start list of Marly Grav Race! We've got 1500 riders locked and loaded, spread across Elite and Age Categories.

Time to see who you'll be battling it out with in your category. Double-check your category, don't get caught in the wrong wave. Head over to the full list and find your name and other competitors.

Start list





Confirmed participants (Women)



Marie Schreiber (LUX)
SD Worx Protime
UCI Cyclo-cross
World Cup Winner



Wendy Oosterwoud (NLD)
PAS Racing
Top 10 Gravel Races



Carolin Schiff (GER)
Canyon Factory Racing
2024 UCI Gravel World
Series Champion



Tessa Neefjes (NLD)
Liv racing
2023 UCI Gravel World
Series Champion



Annabel Fisher (GBR)
BIXS Far-Out Cycling
2023 Gravel Earth
Series Champion



Amelia Mitchell (GBR)
MAAP x Ribble
Winner Grinduro Gravel



Axelle Dubau-Prévot (FRA)
Numéro 31 - Café du cycliste
2nd Traka 360 km 2025



Manon Bakker (NLD)
Crelan-Corendon
Dutch National Cyclo-cross
Champion (2024)



Nicole Frain (AUS)
Ridley Racing Team
Top 10 Gravel Races



Jade Treiffeisen (NLD)
Canyon Racing Team
4th Place at the 2022 UCI
Gravel World Championships



Anne-Marie Worst (NLD)
Cyclocross Reds
UCI Cyclo-cross World Cup
Overall Winner



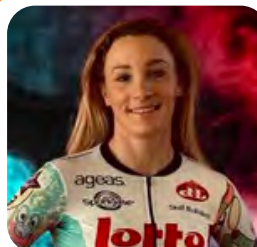
Caroline Baur (CH)
Swiss road cycling
champion 2022



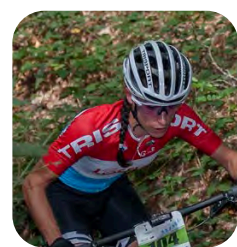
Margot Marasco (FRA)
AG Insurance Soudal
Top 20 Road Races



Kim Knaeps (BEL)
Serso Gravel Bike Team
2024 UCI Gravel World Champion
(Women 35-39 Category)



Alicia Franck (BEL)
Lotto X-Oats
Top 10 CX Races



Fabienne Schauss (Lux)
Toproad Reiserbann
Multiple-Time Luxembourg
National Champion in MTB XCO

Confirmed participants (Men)



Greg Van Avermaet (BEL)

GVA Gold

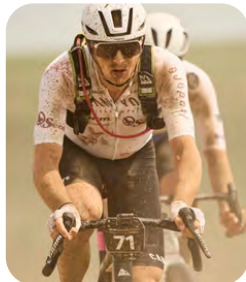
Olympic Champion (Road 2016)



Niels Vandeputte (BEL)

Alpecin-Deceuninck

Winner of U23 CX races



Petr Vakoc (CZE)

Canyon Racing Team

Winner of the Trakka 200 (2023)



Joris Nieuwenhuis (NLD)

Ridley Racing Team

Winner of a UCI Gravel Race (2023)



Paul Voss (GER)

Autsaid x Rose Bikes

Winner of the Trakka 200 (2022)



Ivar Slik (NLD)

Wilier Factory Racing

Winner of Unbound 200 (2022)



Niki Tepstra (NLD)

DTS

Winner of Paris-Roubaix and
Tour des Flandres



Kevin Panhuyzen (BEL)

Giant Offroad Team

2022 UCI Gravel World Champion
(Men 19-34 Category)



Julian Siemons (BEL)

BVA Gold

Top 10 Gravel Races



Laurens Sweeck (BEL)

Crelan-Corendon

2022-2023 UCI Cyclo-cross
World Cup overall winner



Jan Bakelants (BEL)

Tiger

Stage Winner at
Tour de France (2013)



Thomas de Gendt (BEL)

Rose x Classified

Stage winner in the three
Grand Tours and Giro podium



Mathijs Loman (NLD)

leads the men's elite standings
in the UCI Gravel World Series



Felipe Orts (SPA)

Ridley Racing Team

Silver Medalist at the 2024 European
Cyclo-cross Championships



Hugo Drechou (FRA)

Numéro 31 - Café du cycliste

Roc d'Azur Winner (2023)



Jasper Ockeloen (NLD)

Sockeloen.com

UCI Gravel Series Winner



Confirmed participants (Men)



Cameron Mason (GBR)

Cyclocross Reds

British National Cyclo-cross
Champion (2023)



Toby Perry (GBR)

Rose x Classified

Winner The Hills Gravel 2025



Ryan Kamp (NLD)

Fenix

2020 UCI Cyclo-cross
World Champion (Under-23)



Corey Davis (USA)

BIXS Far_Out Cycling

Top 20 Gravel Races



Johnny Hoogerland (NLD)

RH77 Factory Team

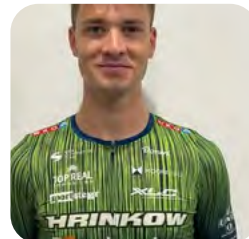
Wearing the polka dot jersey
(King of the Mountains)
at the 2011 Tour de France



Thom Bonder (NLD)

Giant Offroad Team

U23 Dutch Champion
MTB Marathon



Loic Bettendorf (LUX)

Hrinkow Advarics

Elite Luxembourg National
Cyclo-cross Champion



Francis de Greef (BEL)

Klein Brabant MTB

Participation in the
three major tours

Online results

We know you're eager to see how you did! Simply go on the Chronorace website. This is the fastest and most efficient way to check and see if you've qualified for the UCI Gravel World Championships 2025



Award ceremony

The award ceremonies will take place at 3.00 pm (Elites) and (4.00 pm (Age Categories & Open)).

The award ceremony is for all riders placed first, second and third in their category and is mandatory under UCI regulation. Winners will receive an exclusive UCI Gravel World Series winner's jersey!

For the Open race, there will only be one overall podium (men and women). There will be no podiums for age categories.

If you are not a podium finisher, make sure to stop by and honour and celebrate those who made it to the podium.

Jerseys and medals

Winners will receive a UCI Jersey for their category on the podium, while qualified riders will be awarded a UCI Qualifiers Medal. Please note that medals can only be picked up at the event. We will not send them afterward! The top three finishers in each category are invited to the podium ceremony, to collect their medals. Podium ceremony is mandatory for categories' top three.

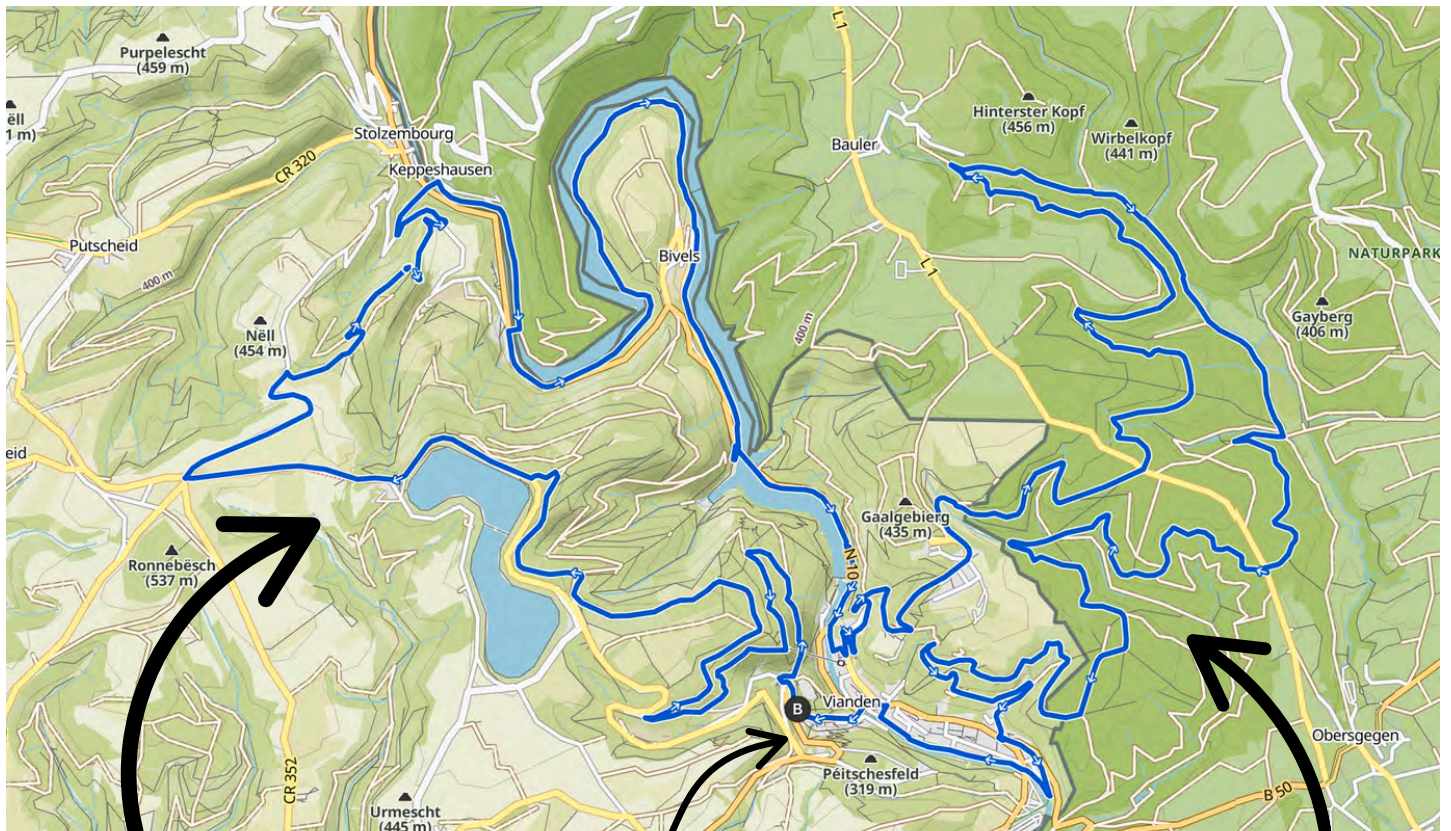


ROUTES

Routes

The Eislek Gravel Luxembourg Course: A Two-Part Adventure

The Eislek Gravel circuit is 46.8 km long and is made up of two parts, the Luxembourg loop and the German loop. This route, to be ridden 1.5 times or 2.5 times depending on the race, will showcase all the qualities of a gravel racer, whether as a climber, rouleur or technician.



1

The Luxembourg Loop - Emotion and altitude in the heart of Vianden

2

The German Loop - Pace and Escape in the Undergrowth

The Luxembourg Loop

This very physical loop starts directly with a fairly steep hill in three stages. The descent that follows alternates between tarmac sections and forest tracks, offering a sensation of speed and freedom. Once along the Our, the route invites you to a fast, fun ride along a winding path back down to Vianden.

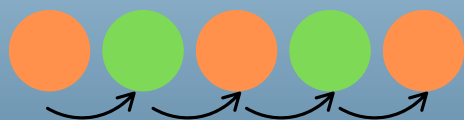
The German Loop

This loop offers a completely different experience: the scenery is gentler, the terrain less demanding, and the pace becomes more rolling. Here, the race extends over long gravel sections, where cyclists can pick up speed and enjoy the fluidity of the route, in perfect harmony with nature.

1 event, 3 possibilities...



Race 115 km D+ 1995m

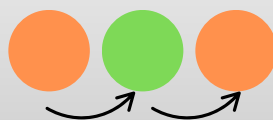


2 complete laps (2 x 47 km) + Loop 1 (23 km)

Men & Women Elite
Men 19-34; 35-39; 40-44;
45-49; 50-54; 55-59
Women 19-34; 35-39; 40-44; 45-49



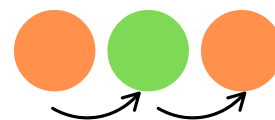
Race 70 km D+ 1195 m



1 complete lap (47 km) + Loop 1 (23 km)

Men & Women Elite
Men 60+
Women 50-54; 55-60; 60+

Eislek Gravel Open 70 km - 1195 m



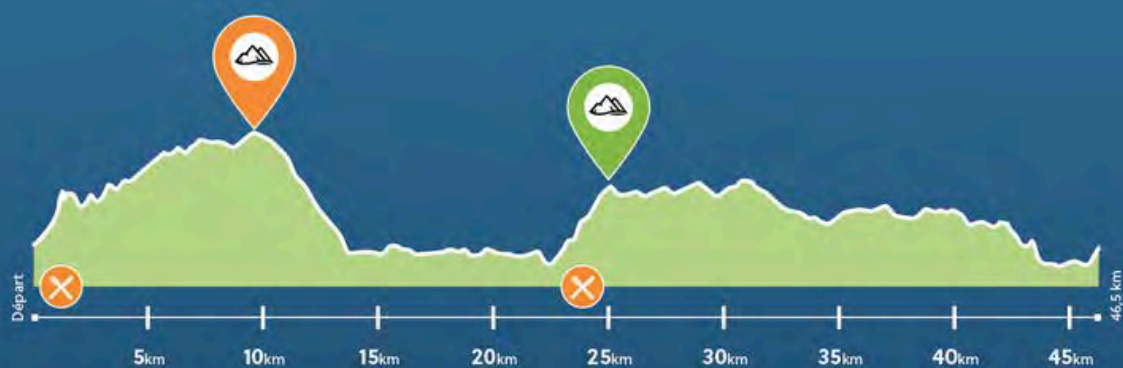
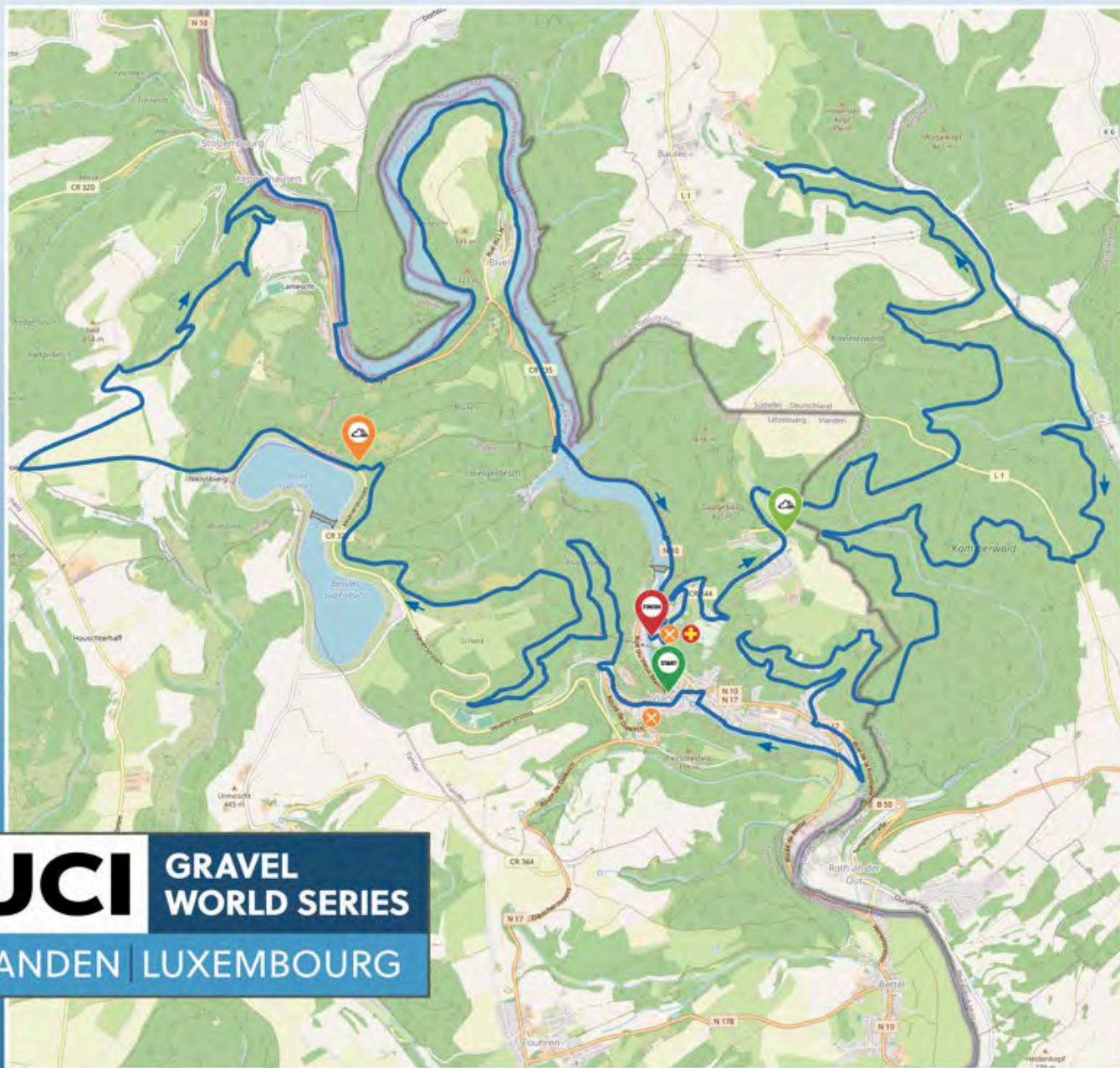
1 complete lap (47 km) + Loop 1 (23 km)

Non-qualifying
Open to all





Map and profile



x 2.5 loops (115km)
x 1.5 loops (70km & Open Races)



Get Mobile App

You can find the GPX files by clicking on this link

<https://www.eislekgravelluxembourg.com/lescourses>

115 km



70 km



Feed zones

Along the course there are two feed zones with (limited) technical support per loop.

To make life easier for participants and limit car journeys (and therefore reduce the carbon footprint), the two refreshment stations have been placed near the start/finish line.

Click on the buttons underneath to see their exact locations.

Important reminder

It is forbidden to throw rubbish outside the feed zones.



Place Vic Abens
(Grand Rue)



Rue Charles Mathias
André (after the
finish line)





Bikes

You may use any type of bike: gravel, road, or mountain bike, but e-bikes, tandems, recumbent bikes, and time trial bikes are not permitted.

Technical support

The race is self-reliant – make sure to bring your own tools and spare tires. Minor mechanical issues can be addressed in the feed zones, where limited tools will be available. Wheel changes are allowed during the race, but bike changes are not.

There will be a technical support stand at the registration site.

Safety FIRST

Yes, it's a race, but safety on the course is our top priority. Never put yourself, other participants, or other road and trail users in danger. Don't take unnecessary risks, and always ride as true ambassadors of our sport. This is especially important during descents, where things can go wrong quickly. Stay safe.

Always follow these rules:

- Ride safely at all times.
- Obey all local laws and traffic regulations.
- Be aware: there may be other road users, including pedestrians, cyclists, and motorists.
- Respect nature and don't litter.
- Always wear your helmet.
- Follow all instructions from the organization and course marshals.

Program

WEDNESDAY 18/06/2025

6:30 PM Social Ride - Track discovery by Panache Velo

FRIDAY 20/06/2025

2:00 PM - 08:00 PM Registrations

2:00 PM Partner Village Opening

6:00 PM Race briefing

SATURDAY 21/06/2025

7:00 AM - 10:00 AM Registrations

9:00 AM Opening of the starting boxes

10:00 AM Start of UCI Gravel World Series - Elite

10:02 AM Start of UCI Gravel World Series - Age Categories

10:25 AM Start of Eislek Gravel Open

10:30 AM Partner Village Opening

12:00 PM After-race party

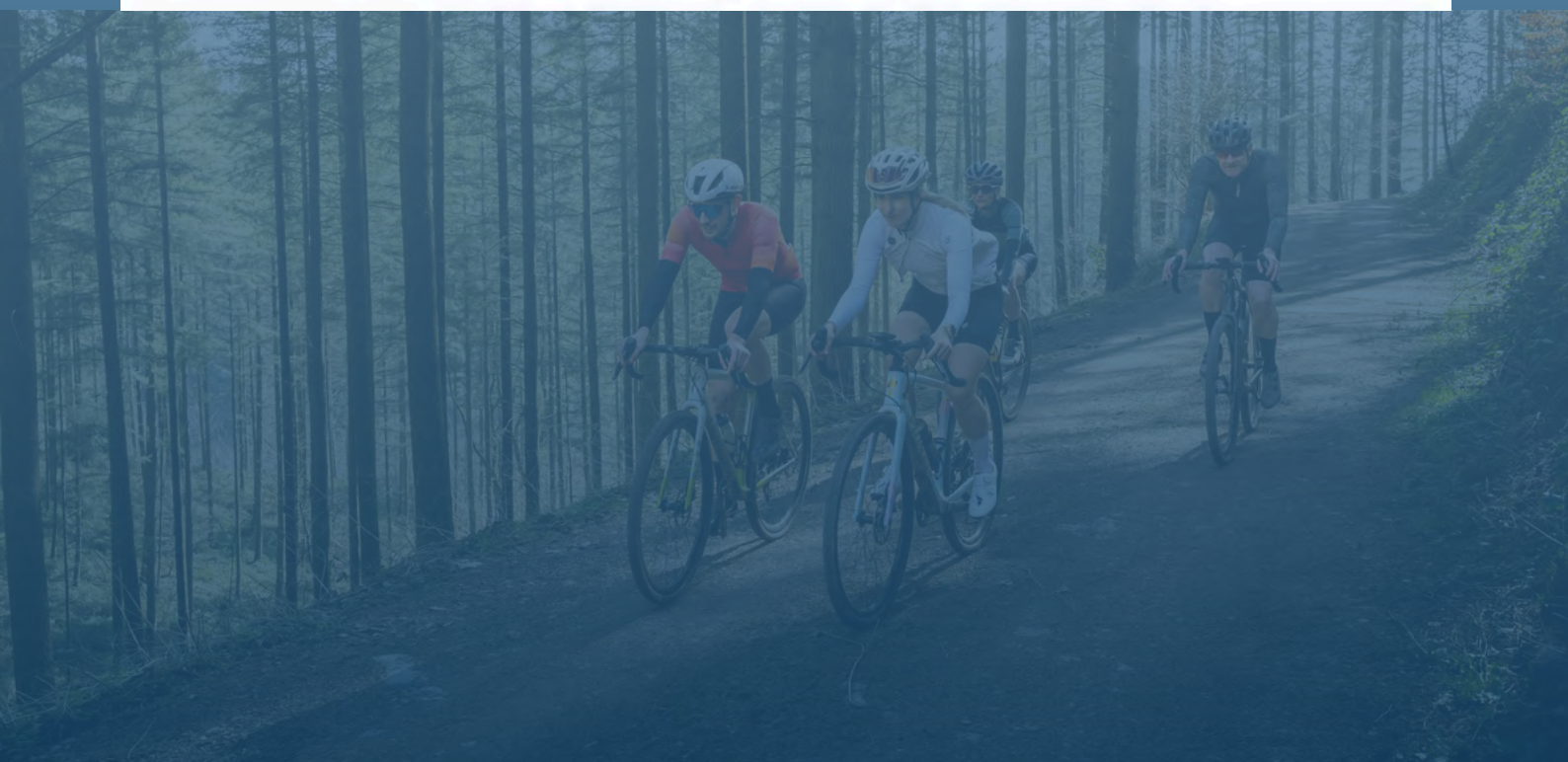
12:00 PM Secure Bike Park

1:30 PM Elite Finish (Estimated speed: 32.5 km/h)

3:00 PM Podium Ceremonies Elites

4:00 PM Podium Ceremonies Age Categories & Open

6:00 PM Partner Village & Bike-park closure



Site Map





Practical information

Shower Facilities

On Sunday, you can use the shower facilities at the Larei Center upon your return.

Lockers

There will be no lockers available during the event, so please plan accordingly and keep valuables safe and secure.

Secure Bike Parking

We've got you covered! There will be a monitored bike parking area, where our amazing volunteers will keep an eye on your bike while you're not riding.



Accomodations

There are various accommodation options available.

Hotels - partners



**New opportunities
across the border !**

Germany and the Felsenland Suedeifel offer accomodations, just a few kilometers from Vianden. We recommend you to look at the official website of the region, or browse through your favorite booking platform for alternatives in the area.

[Click to find your accomodation in the Eifel \(Germany\)](#)



Camping

Camping de l'Our in Vianden or numerous campsites nearby



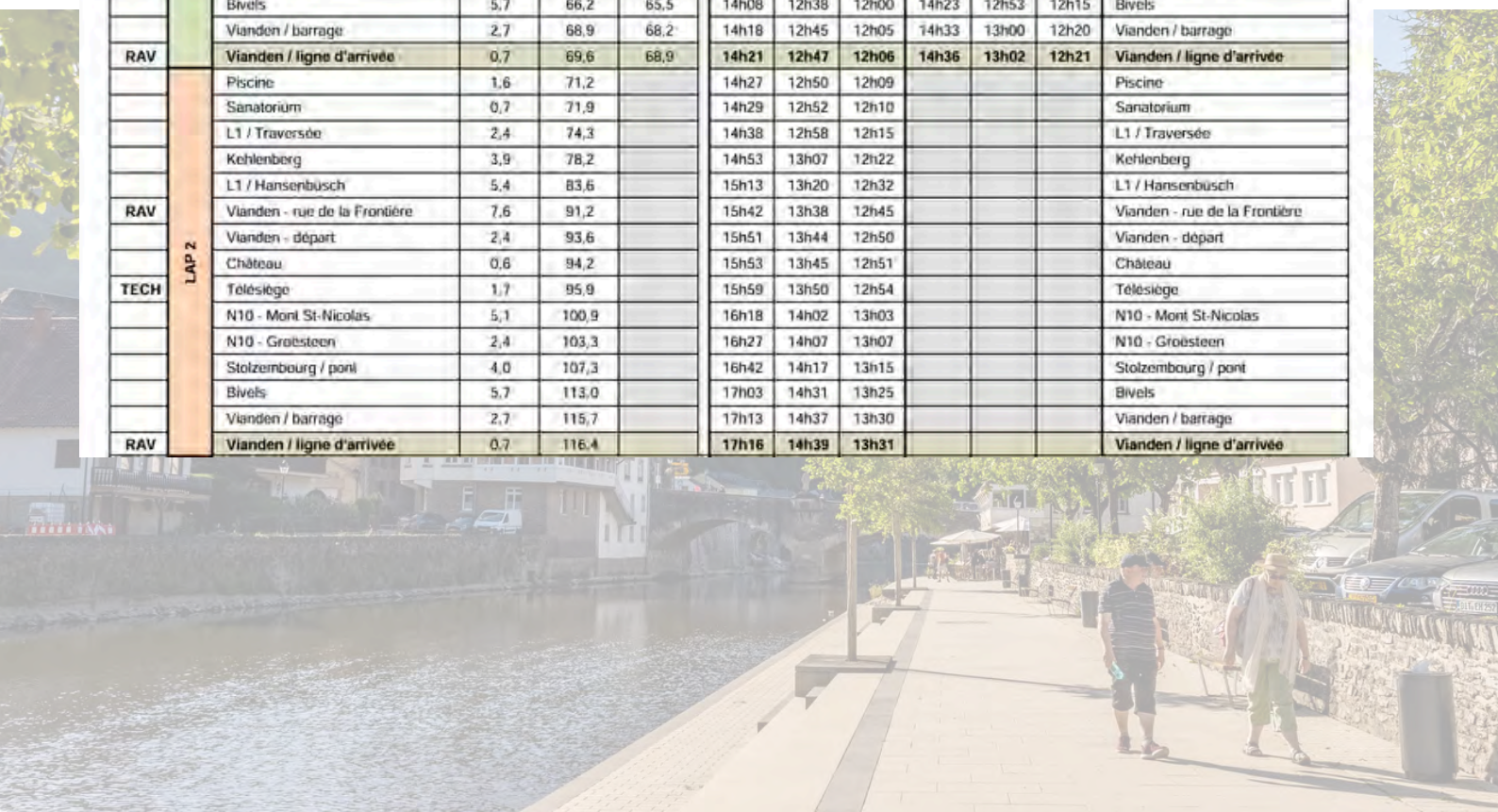
Spectators experience



Race Times

The event is unique in that it allows spectators to see the runners several times without having to take the car: thanks to the passages through the town centre, the feed zones located near the finish area, and access to the first hill via the chairlift.

Eislek GRAVEL LUXEMBOURG					UCI GRAVEL SERIES EISLEK GRAVEL Luxembourg									
					Kilomètres partiels			116			69			
					Ecart	116	69	16,00	25,00	33,00	16,00	25,00	33,00	Moyenne
TECH	START LOOP	Vanden - départ	0,0	0,0	0,0	10h00	10h00	10h00	10h15	10h15	10h15	Vanden - départ		
		Château	0,6	0,6	0,6	10h02	10h01	10h01	10h17	10h16	10h16	Château		
		Télesiège	1,7	2,3	2,3	10h08	10h05	10h04	10h23	10h20	10h19	Télesiège		
		N10 - Mont St-Nicolas	5,1	7,3	7,3	10h27	10h17	10h13	10h42	10h32	10h28	N10 - Mont St-Nicolas		
		N10 - Groësteen	2,4	9,7	9,7	10h36	10h23	10h17	10h51	10h38	10h32	N10 - Groësteen		
		Stolzembourg / pont	4,0	13,7	13,7	10h51	10h32	10h24	11h06	10h47	10h39	Stolzembourg / pont		
		Bivels	5,7	19,4	19,4	11h12	10h46	10h35	11h27	11h01	10h50	Bivels		
		Vanden / barrage	2,7	22,1	22,1	11h22	10h53	10h40	11h37	11h08	10h55	Vanden / barrage		
RAV		Vanden / ligne d'arrivée	0,7	22,8	22,8	11h25	10h54	10h41	11h40	11h09	10h56	Vanden / ligne d'arrivée		
	LAP 1	Piscine	1,6	24,4	24,4	11h31	10h58	10h44	11h46	11h13	10h59	Piscine		
Sanatorium		0,7	25,1	25,1	11h34	11h00	10h45	11h49	11h15	11h00	Sanatorium			
L1 / Traversée		2,4	27,5	26,8	11h43	11h06	10h50	11h58	11h21	11h05	L1 / Traversée			
Kehlenberg		3,9	31,4	30,7	11h57	11h15	10h57	12h12	11h30	11h12	Kehlenberg			
L1 / Hansenbüsch		5,4	36,8	36,1	12h18	11h28	11h06	12h33	11h43	11h21	L1 / Hansenbüsch			
RAV		Vanden - rue de la Frontière	7,6	44,4	43,7	12h46	11h46	11h20	13h01	12h01	11h35	Vanden - rue de la Frontière		
		Vanden - départ	2,4	46,8	46,1	12h55	11h52	11h25	13h10	12h07	11h40	Vanden - départ		
		Château	0,6	47,4	46,7	12h57	11h53	11h26	13h12	12h08	11h41	Château		
TECH		Télesiège	1,7	49,1	48,4	13h03	11h57	11h29	13h18	12h12	11h44	Télesiège		
		N10 - Mont St-Nicolas	5,1	54,1	53,4	13h22	12h09	11h38	13h37	12h24	11h53	N10 - Mont St-Nicolas		
		N10 - Groësteen	2,4	56,5	55,8	13h31	12h15	11h42	13h46	12h30	11h57	N10 - Groësteen		
		Stolzembourg / pont	4,0	60,5	59,8	13h46	12h25	11h50	14h01	12h40	12h05	Stolzembourg / pont		
		Bivels	5,7	66,2	65,5	14h08	12h38	12h00	14h23	12h53	12h15	Bivels		
		Vanden / barrage	2,7	68,9	68,2	14h18	12h45	12h05	14h33	13h00	12h20	Vanden / barrage		
RAV		Vanden / ligne d'arrivée	0,7	69,6	68,9	14h21	12h47	12h06	14h36	13h02	12h21	Vanden / ligne d'arrivée		
		LAP 2	Piscine	1,6	71,2		14h27	12h50	12h09				Piscine	
	Sanatorium		0,7	71,9		14h29	12h52	12h10				Sanatorium		
	L1 / Traversée		2,4	74,3		14h38	12h58	12h15				L1 / Traversée		
	Kehlenberg		3,9	78,2		14h53	13h07	12h22				Kehlenberg		
	L1 / Hansenbüsch		5,4	83,6		15h13	13h20	12h32				L1 / Hansenbüsch		
RAV	Vanden - rue de la Frontière		7,6	91,2		15h42	13h38	12h45				Vanden - rue de la Frontière		
	Vanden - départ		2,4	93,6		15h51	13h44	12h50				Vanden - départ		
	Château		0,6	94,2		15h53	13h45	12h51				Château		
TECH	Télesiège		1,7	95,9		15h59	13h50	12h54				Télesiège		
	N10 - Mont St-Nicolas		5,1	100,9		16h18	14h02	13h03				N10 - Mont St-Nicolas		
	N10 - Groësteen		2,4	103,3		16h27	14h07	13h07				N10 - Groësteen		
	Stolzembourg / pont		4,0	107,3		16h42	14h17	13h15				Stolzembourg / pont		
	Bivels		5,7	113,0		17h03	14h31	13h25				Bivels		
	Vanden / barrage		2,7	115,7		17h13	14h37	13h30				Vanden / barrage		
RAV	Vanden / ligne d'arrivée		0,7	116,4		17h16	14h39	13h31				Vanden / ligne d'arrivée		





Chairlift

The chairlift (which departs near the start/finish area) allows you to fly over the course and reach the top of the first hill to watch the runners.

This access allows you to view the race as it passes through the hill section three times, enabling you to see the riders five times without having to take the car.



Walks

Vianden is full of tourist attractions. We therefore offer two walks of around 3 km that allow you to discover the town and its remarkable sights (the castle, the town museum, the Victor Hugo museum, the dam and its street art) at your leisure.

Vianden Panorama 3km – 98d+
(forest paths & roads)



Vianden tour 3km – 85d+
(only roads)

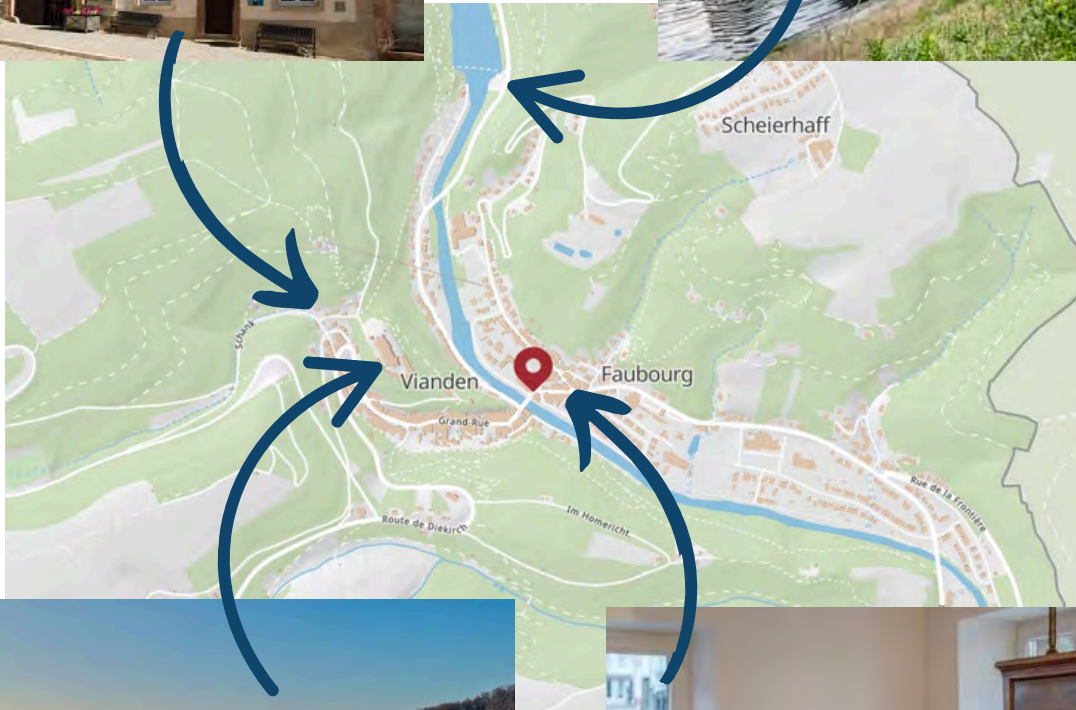


Highlights

Vianden Town Museum



Vianden Dam



Vianden Castle



Victor Hugo Museum

The race circuit passes by these four memorable locations!



Content

Eislek
GR**VEL**
LUXEMBOURG



Pictures and movies

Photos & Aftermovie

Several photographers and a videographer will be out on the course to capture all the action, emotion, and smiles. We'll be creating a full aftermovie and sharing a photo gallery with all participants in the week following the event. Soak it all in, ride hard and don't forget to look up and smile every now and then!

Sportograf



Make your race unforgettable with the pictures from Sportograf! We're excited to announce that this year we will have Sportograf, a professional online photo service on our side to capture your sporting highlight of the year. Professional photographers will be taking photos all along the course to make this day unforgettable for you! Look forward to many spectacular pictures, which you can buy on the Sportograf website after the event. Be excited to see your photos and sign up for the email reminder today! Sportograf will then notify you as soon as your photos are available.

Direct link to photos : <https://www.sportograf.com/event/16398>



Merchandising

If you would like to wear our colours or simply keep a souvenir of this experience, please feel free to visit us at our merchandise stand at the finish line.



Partners

Silver partners



In Extenso
Experts-Comptables

Bronze partners

La Sapinière 
Village de Vacances

d'U Château
RSPELT
F. Lodomez
★★★★S


Anatura.
Live, Feel, Breathe

PEINTURE - DÉCORATION

C&F DECO


Luxfac
FACADE • ISOLATION • PLAFONNAGE • PEINTURE

**Archibald
De Prince**



Guddesch
Hotel • Restaurant • Events

ROVA 
SOL

HM concept
construction bois 


amoline
Jacky & Eils Sprl

FK TOITURES sprl
Charpente - Couverture - Zinguerie - Isolation
Devis gratuit - Patron sur chantier

THANK YOU FOR MAKING THIS HAPPEN!

Partners

Technical partners

DRIVE/RENT

NUTRI-BAY.COM

 AMPYRE


boplan®

 **Orbito**
www.orbito.com

 **BEIM BURG**
METZLEREI AN PARTY-SERVICE
☎ 95 81 24 🌐 www.burg.lu

Authorities & Institutions


ÉISLEK
Mir sinn uewen


VISIT
VIANDEN


NaturparkOUR


F. S. C. L.

LU  EMBOURG
LET'S MAKE IT HAPPEN


Felsenland
Südeifel


Gemeng
PËTSCHENT

Panaché
Vélo

THANK YOU FOR MAKING THIS HAPPEN!

**We look forward to
welcoming you to
Vianden !**



Eislek
GRAVEL
LUXEMBOURG